

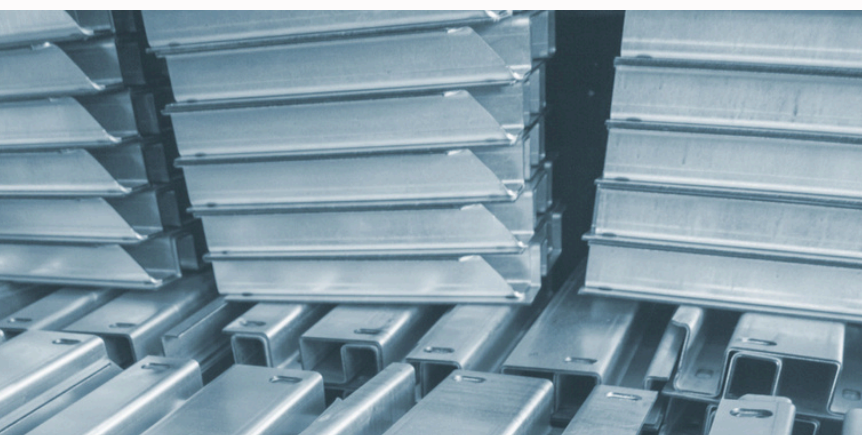


**We do more with metal.**

umetec GmbH steelwork

Technology and business park  
(TGE)

Marie-Curie-Straße 5  
16225 Eberswalde | Germany



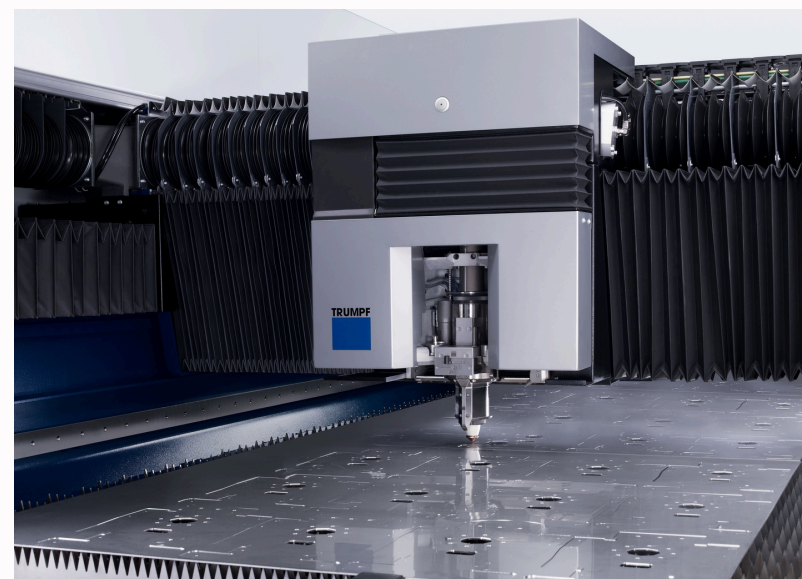
- ISO 9001-2015
- ISO 3834
- EN 15085-2  
(welding of railway vehicles and railway vehicle parts)

### Special components | series production

- we plan and manufacture your individual metal solution
- production of individual special components | complex metal construction projects | welded assemblies
- series production of individual laser and edged components
- recognised quality across the entire range of manufacture in steel construction
- complete: planning | production | construction
- solid values and unbureaucratic flexibility
- 50 highly qualified employees

Wind power and solar industry | mobility and logistics companies | automotive and vehicle industry

Modern and innovative machinery park

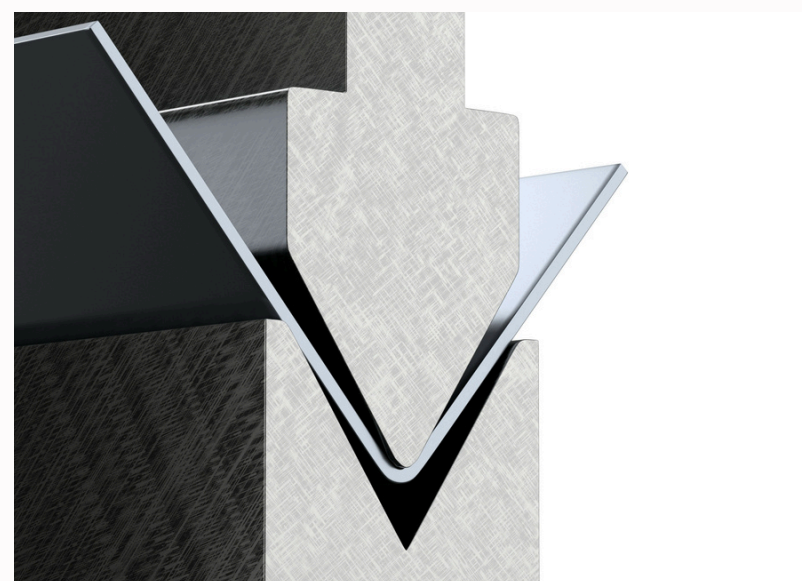


## Laser tech

### TRUMPF TruLaser 3030 | 3030 fiber | 2030 fiber

Quality | process reliability | precision

- burr-free parts even with thick steel
- special parts with small contours
- tubes | profiles | thick structural and stainless steel
- max. sheet sizes: 1500 x 3000 mm
- max. thickness stainless steel up to 20 mm | steel up to 25 mm | aluminium up to 20 mm



## Bending tech

### TRUMPF TruBend 5230 | 7036

Flexibility | precise bending angles

- max. bending length: 3000 mm
- pressing force 2300 kN
- various tools for different bending radii/thicknesses
- can bend complex thin and thick sheet metal parts with high angular accuracy
- bends even long profiles straight



Thorough coordination with the client



**CARTHEIA**  
powered by umetec

Customer service of the future: solar charging service

CARTHEIA is the smart solution for the growth market of e-mobility and charging infrastructure.

### Quality & Design

- > high-quality steel hot-dip galvanised
- > minimalist design RAL-powder-coated

### Ideal for businesses

- > modular construction smarte production

We value communication

Talk to us



Contact  
**Alexandra Walter (CEO)**

E-Mail: [info@ume-tec.de](mailto:info@ume-tec.de)  
[www.ume-tec.de](http://www.ume-tec.de)



Tel.: +49 (0) 3334 81924-0

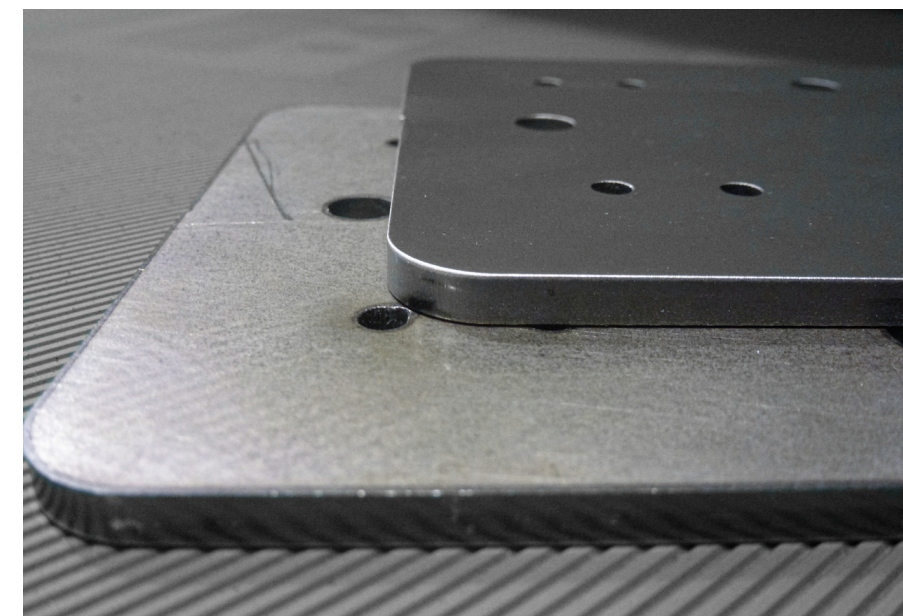
## Profil processing



### URBAN CNC-Profil processing centre AP 6500-B

Milling work | drilling work

- flexible manufacturing solution for long and small part machining
- wide working range 6.500 mm (if nec. up to 13.000 mm) at 300 x 400 mm
- belt spindle power 5,5 kW at 6000 rpm
- Heidenhain CNC control TNC 620

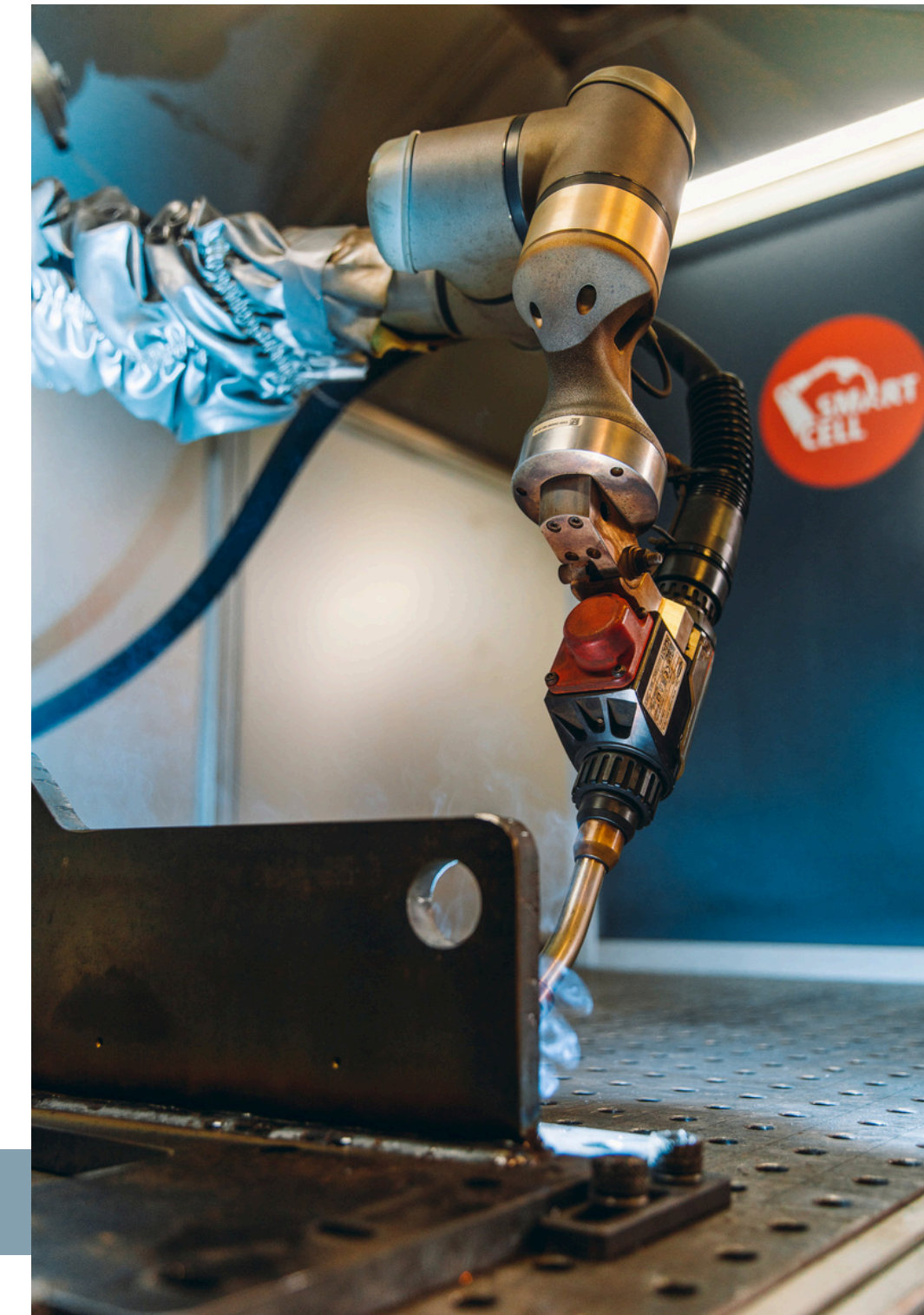


## Deburring machine

### NS Máquinas DM1100 ZC EVO

Deburring | edge rounding

- up to 1.000 mm working width
- from 50 x 50 mm part size
- transverse band technology
- internal and external contours are deburred over the entire surface



## Welding technology

umetec GmbH has invested in the innovative and fully automated **COBOT WELDING**.

The **SmartCell** from **FRONIUS** combines an intuitive operating concept with reproducible high quality welding.

CE stamps for the safety of our employees.



### Our services

Perfect Welding

- 20 welding workstations
- welding methods WIG | MIG | MAG
- Certification according to DIN EN ISO 3834
- fully automated COBOT WELDING with the SmartCell from FRONIUS GmbH

**COBOT WELDING**

We understand the demands of the modern steel-construction industry